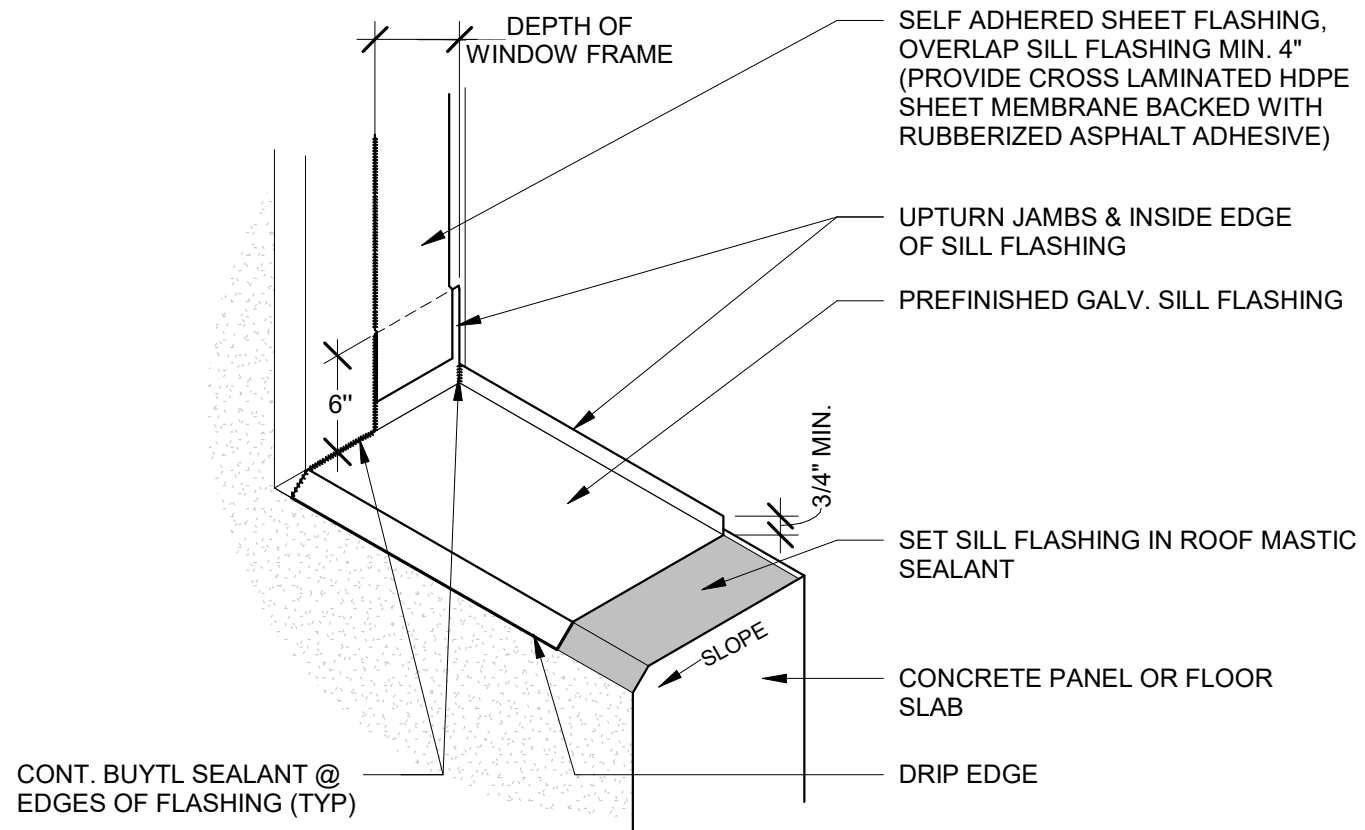


TYP HEAD/SILL @ MECH. LOUVER

A7.11 | REVISION DATE: 12.28.2020 | SCALE: 3" = 1'-0"

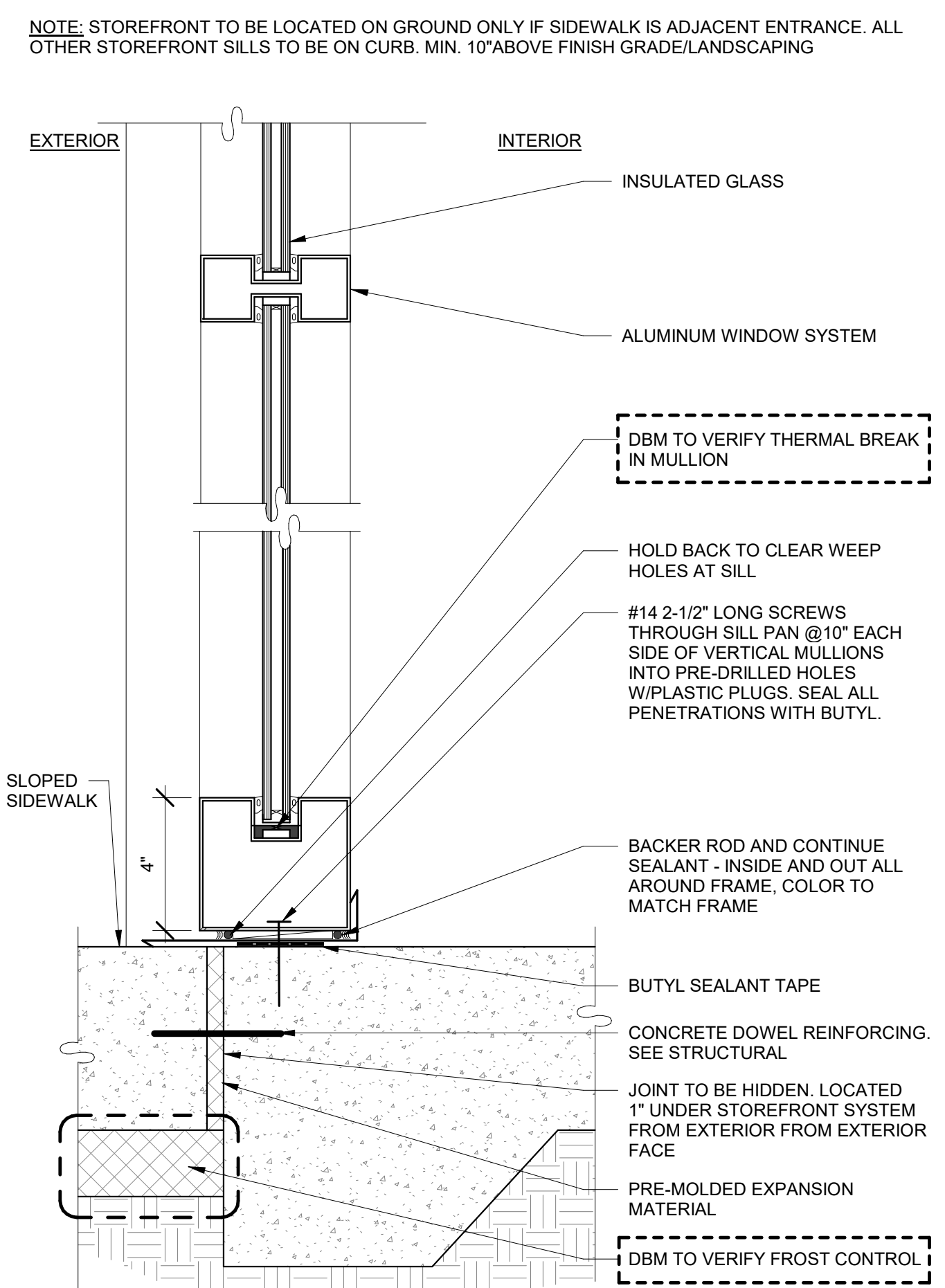
17



TYP FLASHING @ WALL OPENINGS

A7.12 | REVISION DATE: 11.12.2018 | SCALE: 1 1/2" = 1'-0"

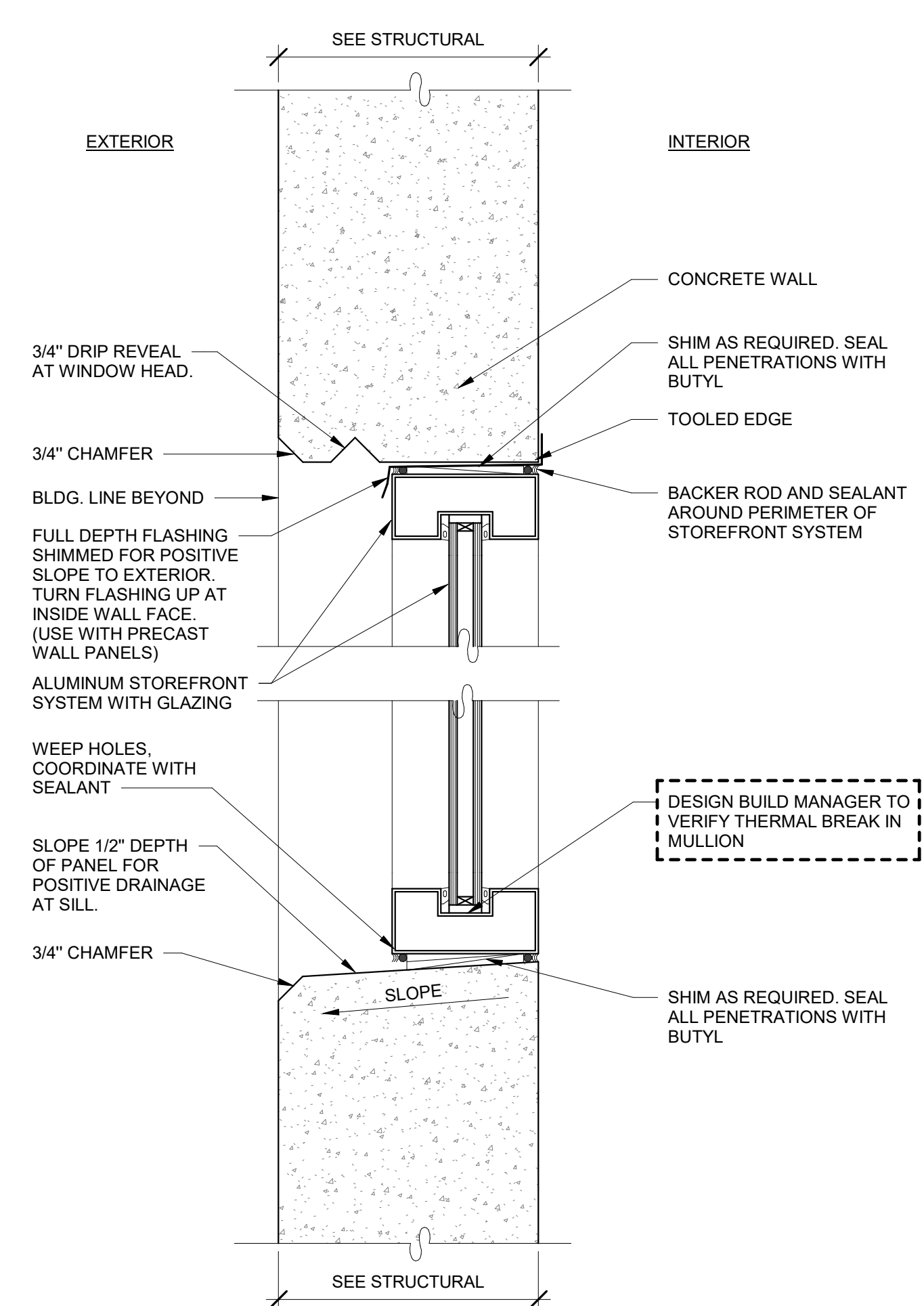
18



TYP STOREFRONT SILL AT GRADE

A7.9 | REVISION DATE: 11.12.2018 | SCALE: 3" = 1'-0"

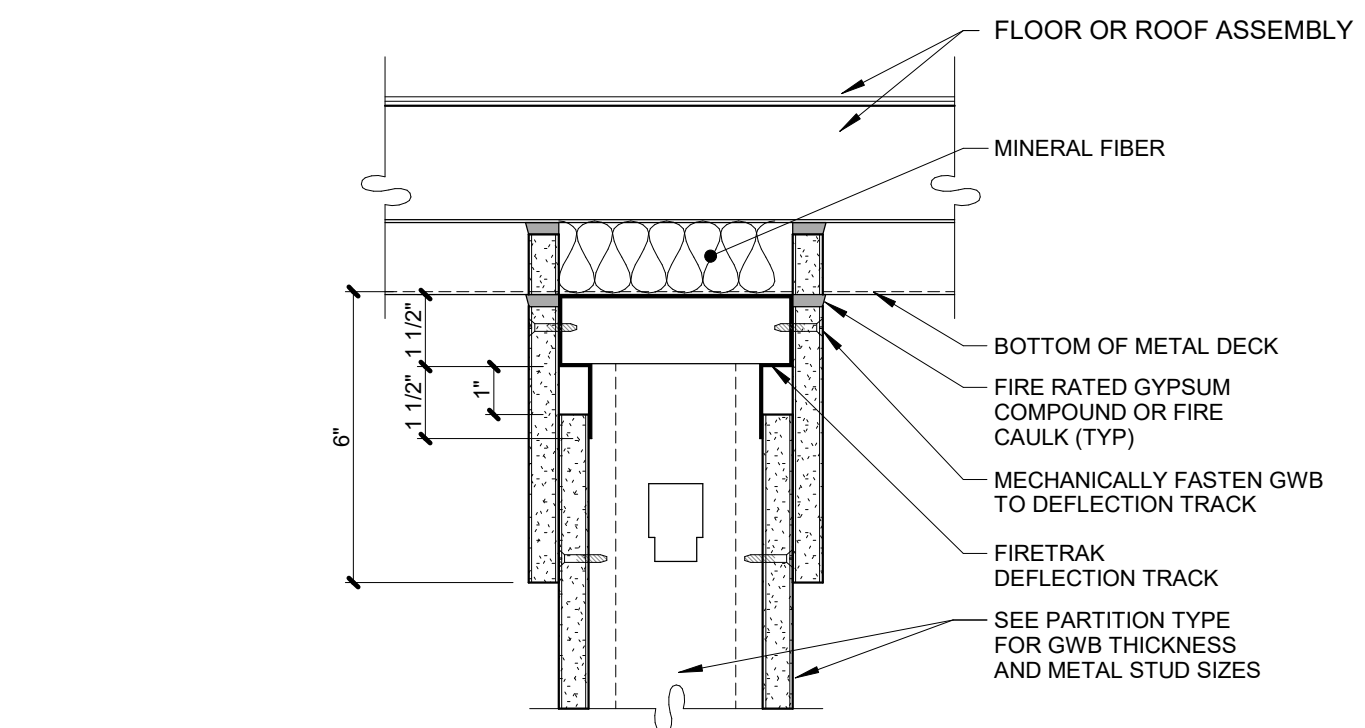
12



CLERESTORY WNDW HEAD/SILL

A7.10 | REVISION DATE: 11.12.2018 | SCALE: 3" = 1'-0"

14



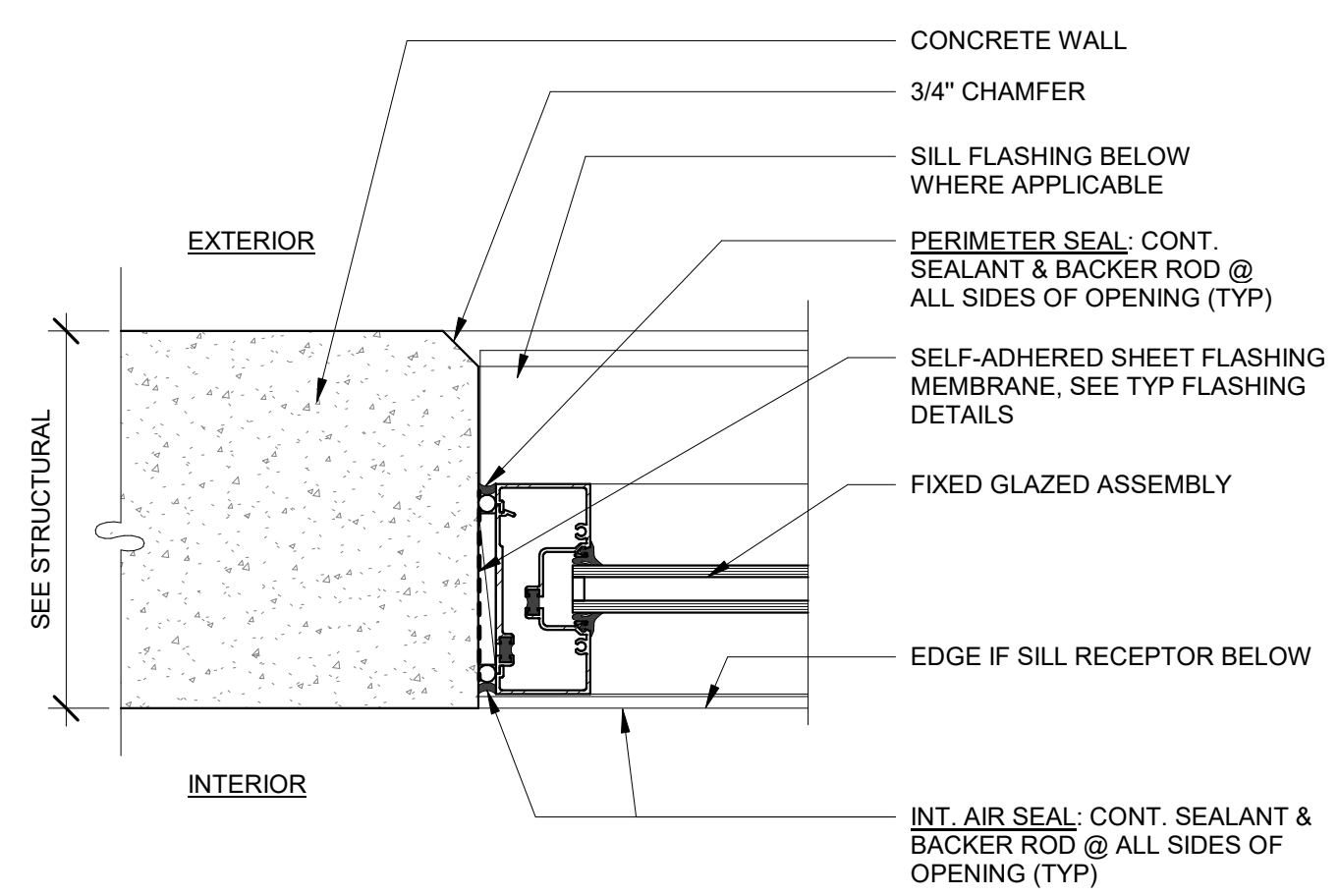
FIRE RATING 1

UL DESIGN HW-D-0080

1HR RATED WALL HEAD

SCALE: 3" = 1'-0"

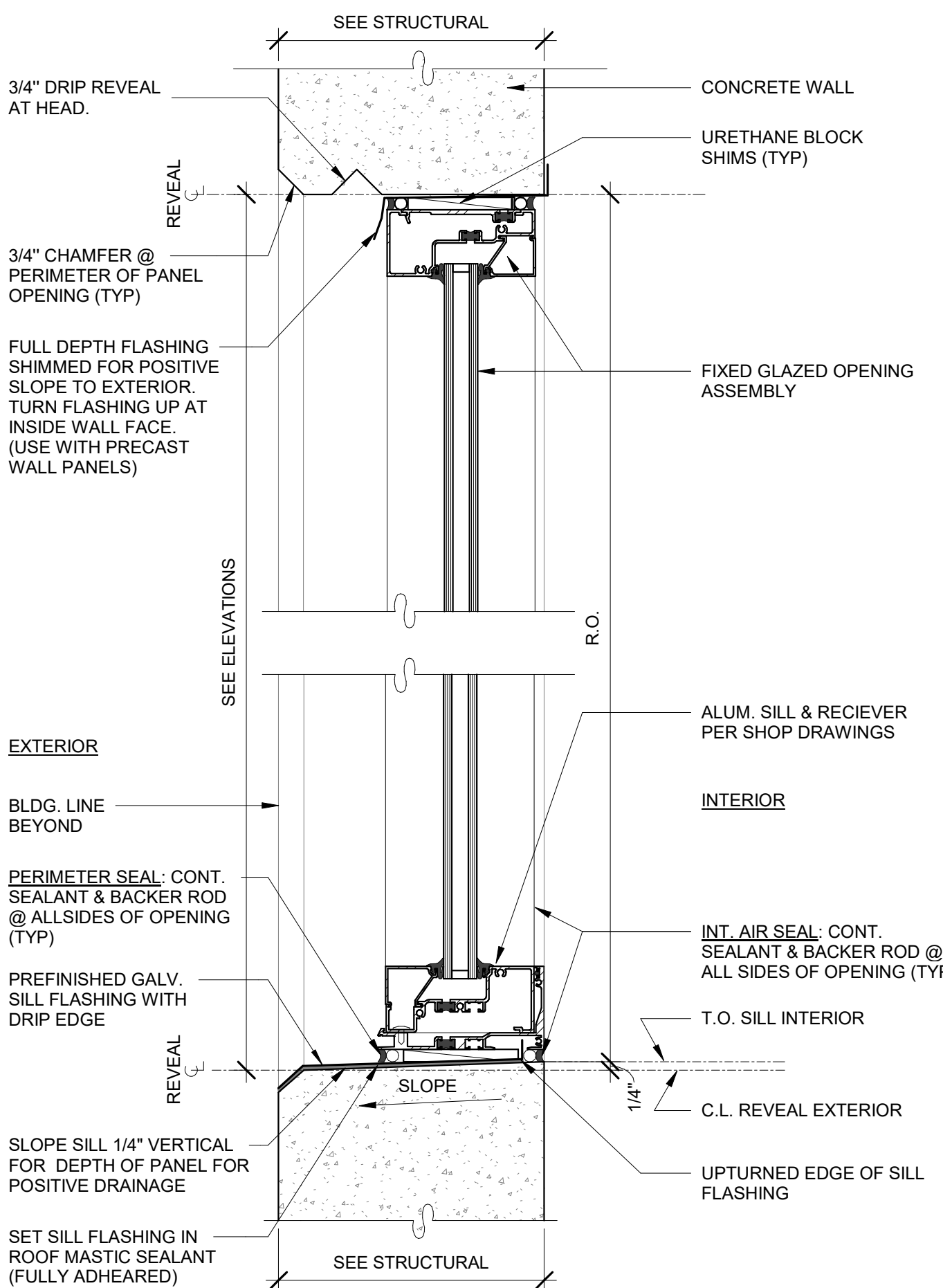
7



TYP JAMB DTL @ GLAZED ASSEMBLY

A7.6 | REVISION DATE: 12.28.2020 | SCALE: 3" = 1'-0"

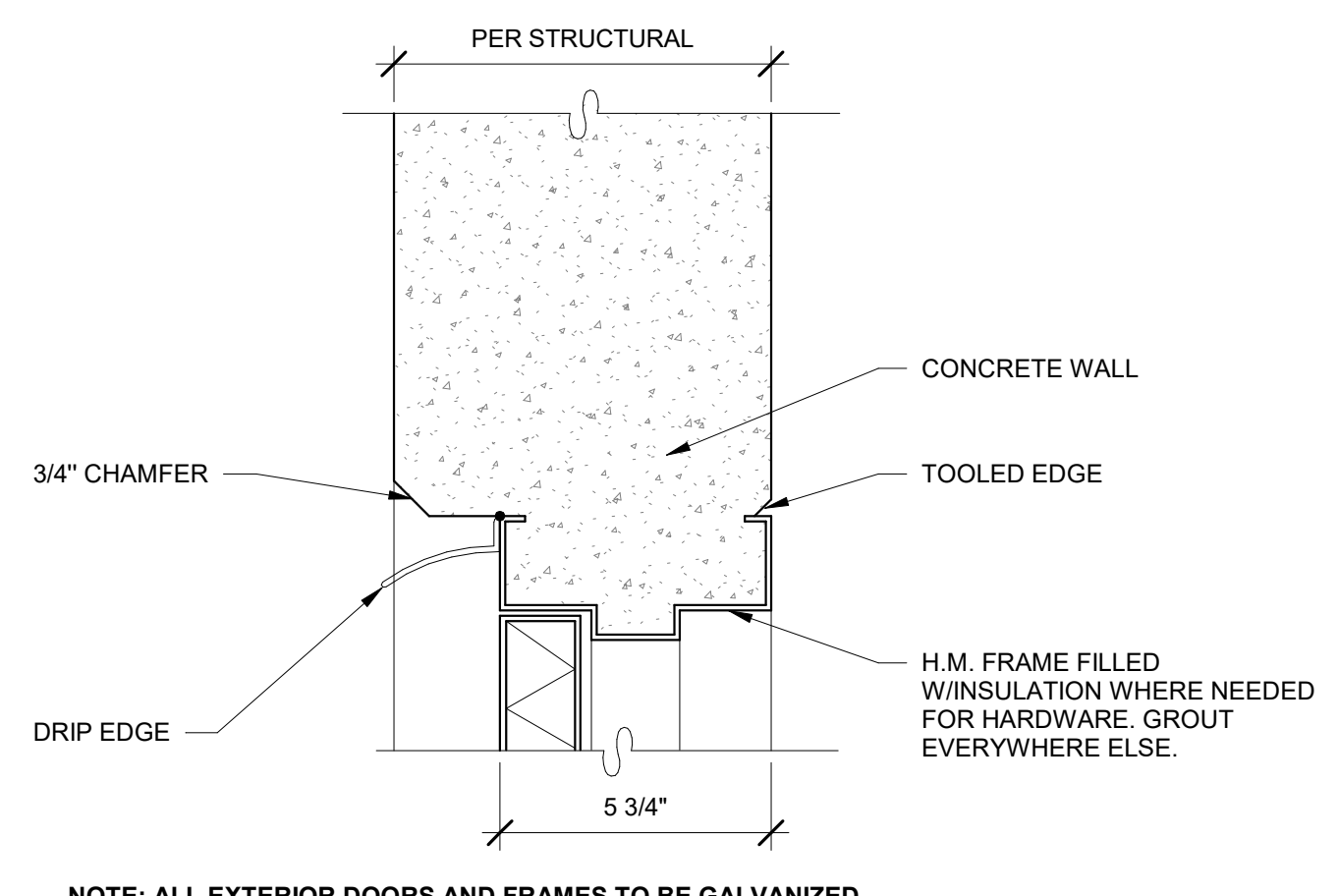
6



TYP HEAD/SILL @ GLAZED OPENING

A7.7 | REVISION DATE: 11.12.2018 | SCALE: 3" = 1'-0"

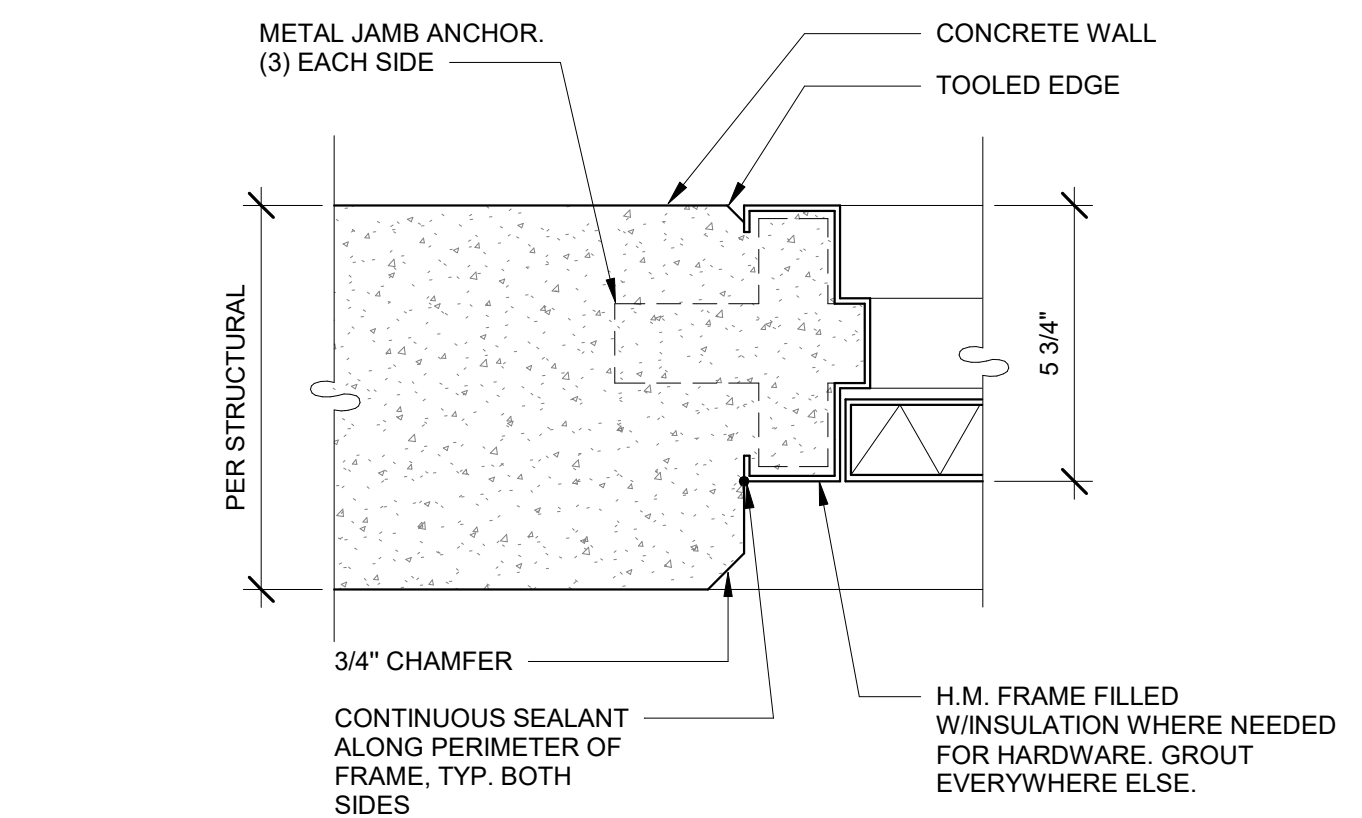
8



HOLLOW METAL DOOR HEAD

A7.1 | REVISION DATE: 11.12.2018 | SCALE: 3" = 1'-0"

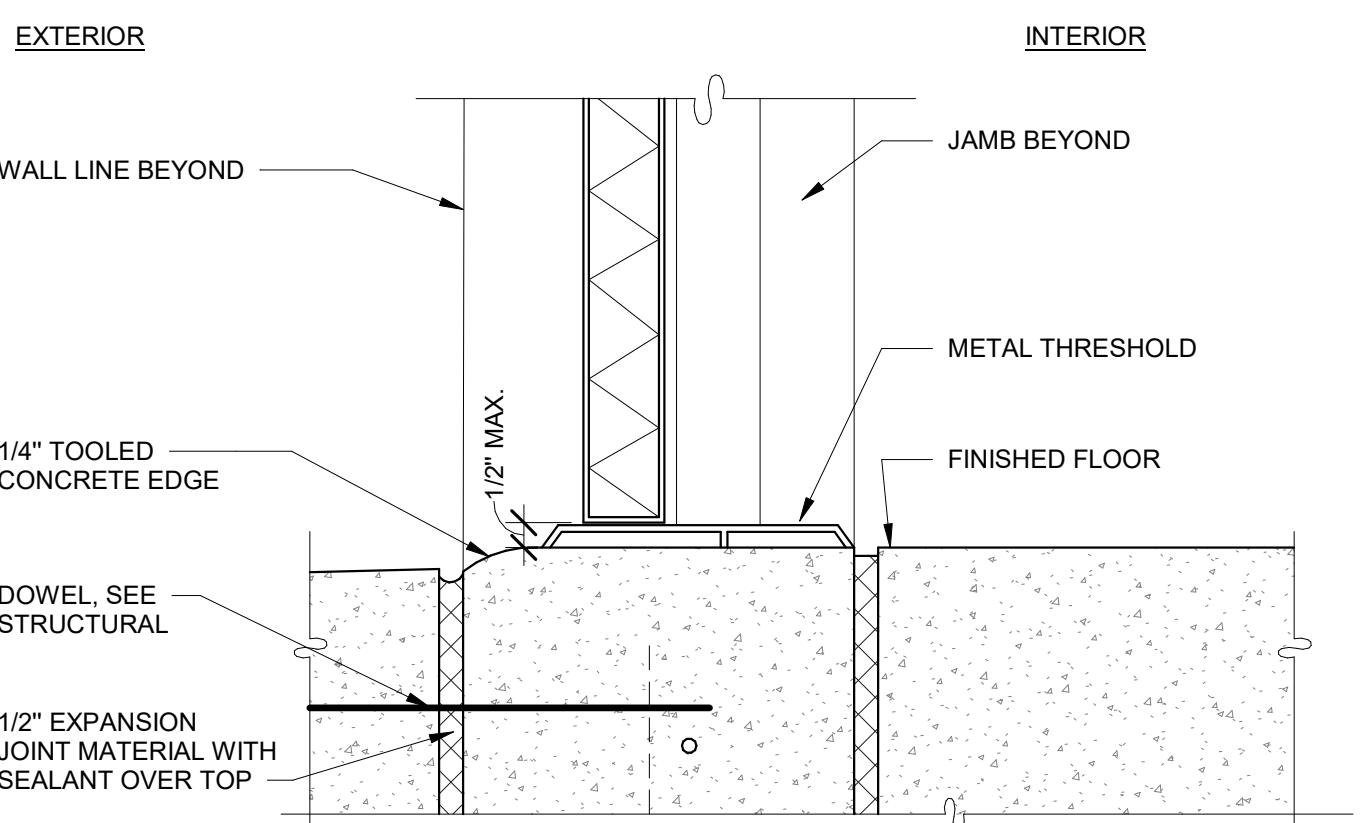
1



HOLLOW METAL DOOR JAMB

A7.1 | REVISION DATE: 11.12.2018 | SCALE: 3" = 1'-0"

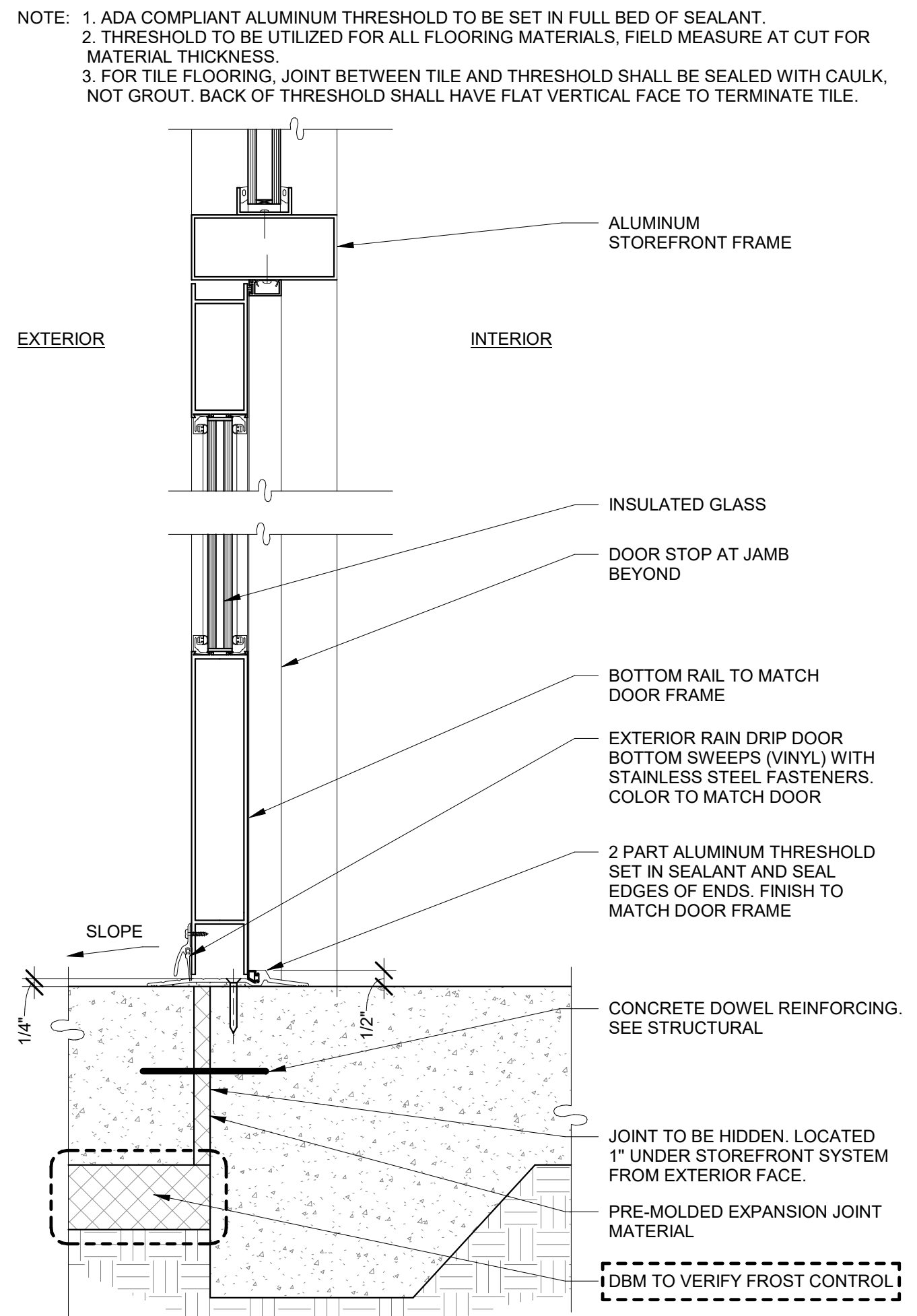
2



HOLLOW METAL DOOR SILL

A7.2 | REVISION DATE: 11.12.2018 | SCALE: 3" = 1'-0"

3



HEAD/SILL @ STOREFRONT DOOR

A7.4 | REVISION DATE: 11.12.2018 | SCALE: 3" = 1'-0"

5

SUBMITTALS		
NO.	DATE	DESCRIPTION
	05.27.2022	PROGRESS SET